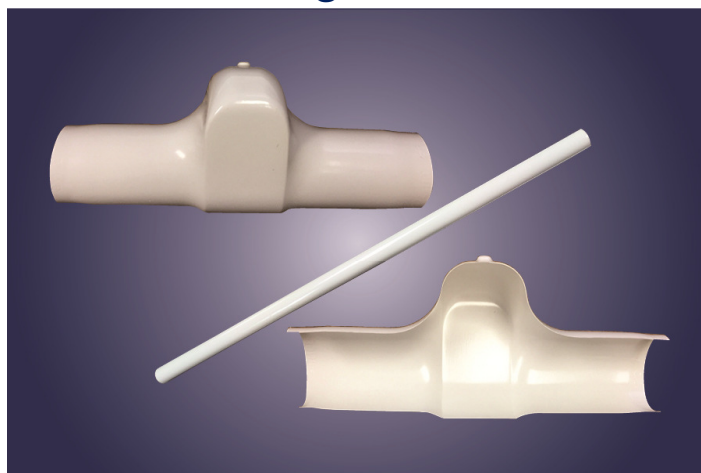
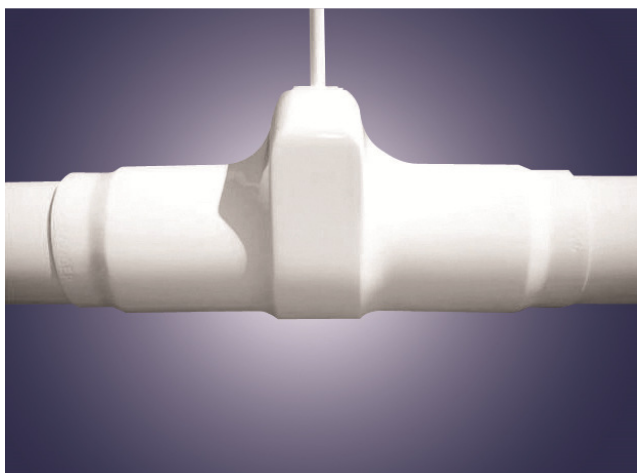




Wraparoos™

The Ultimate 25-50 Flame/Smoke Rated Clevis Hanger PVC Covers



Description

The patented 25/50 Flame-Smoke rated Wraparoos Hanger Cover is a three-piece cover designed to shelter and protect clevis-type pipe insulation hangers and down rod. This esthetically UV resistant system developed for use in food, pharmaceutical, medical and clean room buildings. The Wraparoos can be a totally sealed with PVC Weld Adhesive, especially ideal for food plants.

Features and Benefits

- Wraparoos PVC is 25-50 Flame/Smoke rated on a component basis which makes the product ideal for piping running through projects demanding the 25-50 Flame/Smoke rating throughout the building.
- Wraparoos snaps on quickly for fast installation. They are ideal for retrofit applications because the Wraparoos fits right over current insulated hanger.
- A matching rod cover provides full coverage of rod length.
- The Wraparoos ends reduce to the outside diameter of the insulation to create a tight, closed jacket connection.
- Compliant with fungi and bacteria ASTM C1338, G21 & G22 test.
- The Wraparoos covers the pipe insulation to protect it from damage or abuse.
- Multiple colors available to match the colors of the adjoining PVC and pipe jacket. Bright white PVC color provides a clean appearance.
- The Buckaroos M-150 Multi-Seal PVC Weld Adhesive seals completely for bacteria isolation.
- Their high impact strength means they resist cracking and are very durable.
- Wraparoos are very low maintenance. They are easy-to-clean with a damp cloth.

Applications

The Wraparoos Hanger Cover fits over the clevis hanger and the corresponding insulated pipe sizes from 2" outer diameter to 8-1/2" OD. The product is designed for environmentally sensitive areas like food process piping and clean room areas, and for areas demanding an ultra-clean, bacteria free, and overall pleasant appearance.

Installation Instructions

For indoor use only, align the Wraparoos two molded halves and securely enclose the pipe insulation and clevis hanger with an overlap for easy welding. The Wraparoos' rod hole is pre-cut for easy alignment and adjustment. Cut the provided rod cover to length equal to the rod height. Wrap the rod cover around the rod. Join the rod cover to the top of the Wraparoos provided pre-cut hole. Apply Buckaroos PVC Weld Adhesive to secure the rod cover to the base sections of the Wraparoos to complete the installation of a sealed system.

Sizes Available

Wraparoos are 14" in length and covers clevis hanger sizes starting at 1-1/2" to 8" and the corresponding pipe insulation outer diameters from 2" OD to 8-1/2" OD.



Technical Data

| Physical Properties | Typical Results | Specification Compliance |
|---|---|---|
| Specific Gravity | 1.41 | ASTMD-792 |
| Izod Impact (1/4") ft. lb./in | 3.7 | ASTMD 256 |
| Tensile Strength, PSI | 6,011 | ASTMD-638 |
| Tensile Modulus, PSI | 361,000 (25,380kg/cm ²) | ASTMD-638 |
| Flexural Strength, PSI | 9,396 | ASTMD-790 |
| Heat Deflection Temp. @ 264 P.S.I.(8.95kg//cm²) | 157°F | ATSMD-648 |
| VICAT Softening Temp. | 198°F(92°C) | ASTMD-1525 |
| Water Vapor Transmission 70°F & 50% Relative Humidity. Tested over code compliant vapor barrier* | 0.020" thick ≤ 0.047 0.030" thick ≤ 0.027 0.020" thick ≤ 0.02 | ASTM E-96-95 ASTM E-96-95 *ASTM C1136@ ≤ 0.02 perms |
| Surface Burning Characteristics | Flame ≤25 / Smoke ≤ 50 | ASTM E 84 and CAN/ULC S102 |
| Puncture Resistance | 0.006" thick 178 Beach Units 0.015" thick 221 Beach Units | ASTMD781 ASTMD781 |
| Electrical Resistance | Non-conductor | |
| Operating Temperature: - 20°F(-29°C) to 140°F(60°C) | | |
| Green Building Attributes | | |
| Manufacturing location: Clearwater, FL | LEED Credits per V4: | Contributes EA, MR, EQ (See Mfr. LEED credit Guide) |
| Recycled content: Pre 55+% | RoHS: | Heavy Metal Compliant |
| CA 1350 – VOC: Pass office and school | DecaBDE ≤ 0.01% | Pass state of Oregon |
| Berkeley Analytical: Cert NO 160504-10 | Rigid PVC: | No plasticizers or phthalates |

Specifications – Boss #150 Multi-Seal Sealant

NSF Registered for nonfood compounds. Meets former USDA P1 Guidelines for use in and around food processing areas. Meets TT-S-0002230C, TYPE II, Class A; ASTM C920, Type S, Grade NS, Class 25, Use NT, G, M, A and O; CAN/CGSB 19.13-M87.

Sizing Chart

| Iron Pipe Size (inches) | Insulation Thickness (inches) | | | | | | | |
|-------------------------|-------------------------------|-----|-----|-----|-----|-----|-----|-----|
| | 1/2 | 1 | 1½ | 2 | 2½ | 3 | 3½ | 4 |
| 1/2 | 4 | 8 | 10 | 13 | 15 | n/a | 18 | n/a |
| 3/4 | 6 | 8 | 10 | 13 | 15 | n/a | 18 | n/a |
| 1 | 6 | 9 | 11 | 13 | 15 | n/a | 18 | n/a |
| 1 ¼ | 8 | 9 | 13 | 13 | 15 | n/a | 18 | n/a |
| 1 ½ | 8 | 10 | 13 | 15 | n/a | 18 | n/a | n/a |
| 2 | 9 | 11 | 13 | 15 | n/a | 18 | n/a | n/a |
| 2 ½ | 10 | 13 | 15 | n/a | 18 | n/a | n/a | n/a |
| 3 | 11 | 13 | 15 | n/a | 18 | n/a | n/a | n/a |
| 3 ½ | 13 | 15 | n/a | 18 | n/a | n/a | n/a | n/a |
| 4 | 13 | 15 | n/a | 18 | n/a | n/a | n/a | n/a |
| 5 | 15 | n/a | 18 | n/a | n/a | n/a | n/a | n/a |
| 6 | n/a | 18 | n/a | n/a | n/a | n/a | n/a | n/a |

| Copper Pipe Size (inches) | Insulation Thickness (inches) | | | | | |
|---------------------------|-------------------------------|-----|-----|-----|-----|-----|
| | 1/2 | 3/4 | 1 | 1½ | 2 | 2½ |
| 5/8 | 4 | 4 | 8 | 9 | 11 | 13 |
| 7/8 | 4 | 4 | 8 | 10 | 13 | 15 |
| 1 1/8 | 6 | 6 | 8 | 10 | 13 | 15 |
| 1 3/8 | 6 | 8 | 9 | 11 | 13 | 15 |
| 1 5/8 | 8 | 8 | 9 | 11 | 13 | 15 |
| 2 1/8 | 9 | 9 | 10 | 13 | 15 | n/a |
| 2 5/8 | 10 | 10 | 11 | 13 | 15 | n/a |
| 3 1/8 | 11 | 11 | 13 | 15 | n/a | 18 |
| 3 5/8 | 13 | 13 | 13 | 15 | n/a | 18 |
| 4 1/8 | 13 | 13 | 15 | n/a | 18 | n/a |
| 5 1/8 | 15 | 15 | n/a | 18 | n/a | n/a |
| 6 1/8 | n/a | n/a | 18 | n/a | n/a | n/a |

| Wraparoos™ - Clevis Hanger Size to Pipe Insulation OD Fitting Chart | | | | | | | | | |
|--|-------|-------|-------|-------|--------|--------|--------|--------|--------|
| Item Code | Wrap4 | Wrap6 | Wrap8 | Wrap9 | Wrap10 | Wrap11 | Wrap13 | Wrap15 | Wrap18 |
| Max OD (in) | 2 | 2.5 | 3 | 3.5 | 4 | 4.5 | 5.5 | 6.5 | 8.5 |
| Clevis Hanger Size | 1-1/2 | 2 | 2-1/2 | 3 | 3.5 | 4 | 5 | 6 | 8 |

Revision 9/2017